



**We provide superior performing compressed air & fluid systems with engineered longevity to reduce operating costs and improve productivity.**

### AIRpipe USA

Tel: 602.362.PIPE (7473)  
6855 S Kyrene Rd, Suite #101, Tempe, AZ 85283  
Email: [customerservice@airpipeusa.com](mailto:customerservice@airpipeusa.com)  
Web: [www.airpipeusa.com](http://www.airpipeusa.com)

### AIRpipe CHINA

Tel: +86 574 5587 6761  
Fax: +86 574 8788 5151  
No.18 MoGanShan Road, BeiLun District, NingBo, China 315800  
Email: [info@airpipetech.com](mailto:info@airpipetech.com)  
Web: <http://www.airpipetech.com/en/>

### AIRpipe KOREA

Tel: 82-01031743896  
No.201,124-24, Dorim-ro, Yeongdeungpo-gu, Seoul, Republic of Korea 07416  
Email: [ethan@airpipetech.com](mailto:ethan@airpipetech.com)  
Web: <http://www.airpipetech.com/kr/>

### AIRpipe EUROPE

Tel: +33 (0)2 40 05 10 20  
4 impasse Augustin Fresnel, 44800 Saint-Herblain, France  
Email: [contact@airpipe-Europe.com](mailto:contact@airpipe-Europe.com)  
Web: [www.airpipe-europe.com](http://www.airpipe-europe.com)

### AIRpipe TAIWAN

Tel: +886-3-5889930 Fax: +886-3-5889970  
No. 283-41, Baozhong Rd., Xintu Township, Hsinchu Country 305, Taiwan (R.O.C.)  
Email: [jeff\\_lung@airpipetech.com](mailto:jeff_lung@airpipetech.com)  
Web: [www.airpipetech.com](http://www.airpipetech.com)

### AIRpipe VIETNAM

Tel: 02873001984  
3/18 Le Thi Rieng, Quarter 1, An Thoi Ward, District 12, HCMC, Vietnam  
Email: [chenjs@airpipetech.com](mailto:chenjs@airpipetech.com)  
Web: <http://www.airpipetech.com/vie/>

Shreyansh Enterprises :9899611990, 9650491991



## ENGINEERED FOR SUPERIOR PERFORMANCE

*Stainless Steel Connection System*



[www.airpipe.in](http://www.airpipe.in)

Instamod Air Pipe Pvt. Ltd.  
709, Shahpuri Tower, C-58, Janakpuri,  
New Delhi - 110058. Tel : 011- 49535588  
Email : [sales@airpipe.in](mailto:sales@airpipe.in), [santosh.kumar@airpipe.in](mailto:santosh.kumar@airpipe.in)



\* AQUApipe is a product brand in AIRpipe Group.

Publication AIRpipe – #01/2019/EN/AP  
AIRpipe reserves the rights to modify this documents without prior notice.





\* AQUApipe is a product brand in AIRpipe Group.

## ENGINEERED FOR SUPERIOR PERFORMANCE

AQUApipe is focusing on fluids supply system solution, it belongs to AIRpipe. By utilizing synergy of piping connection technology from AIRpipe, AQUApipe brings superior performance of thin wall stainless steel pipe system.

By using this unique patented technology, AQUApipe not only inherits all good benefits from stainless steel, but also help you to reduce the installation and material costs to a minimum level.

Now it's time to say goodbye to your welding or threading toolset!

GOODBYE...



AQUApipe specializes in solutions for compressed air and fluids distribution. Through out the last 10 years, we have continued to invest in R&D, by taking into account market feedback and real-world conditions, our technology has gone through several stages of evolution. Today the new generation of products are engineered to be the most superior products available.



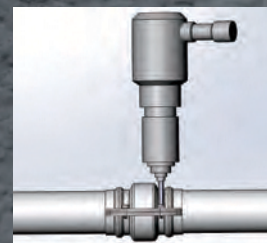
More than 31,000m<sup>2</sup> layout, 100% ownership of manufacturing plants, R&D center, office, logistic center. We're committed to your total solution provider for products, system design, engineering proposal and installations.

Our products are utilized globally for all compressed air, inert gas, and fluid applications.



# OUR TECHNOLOGY

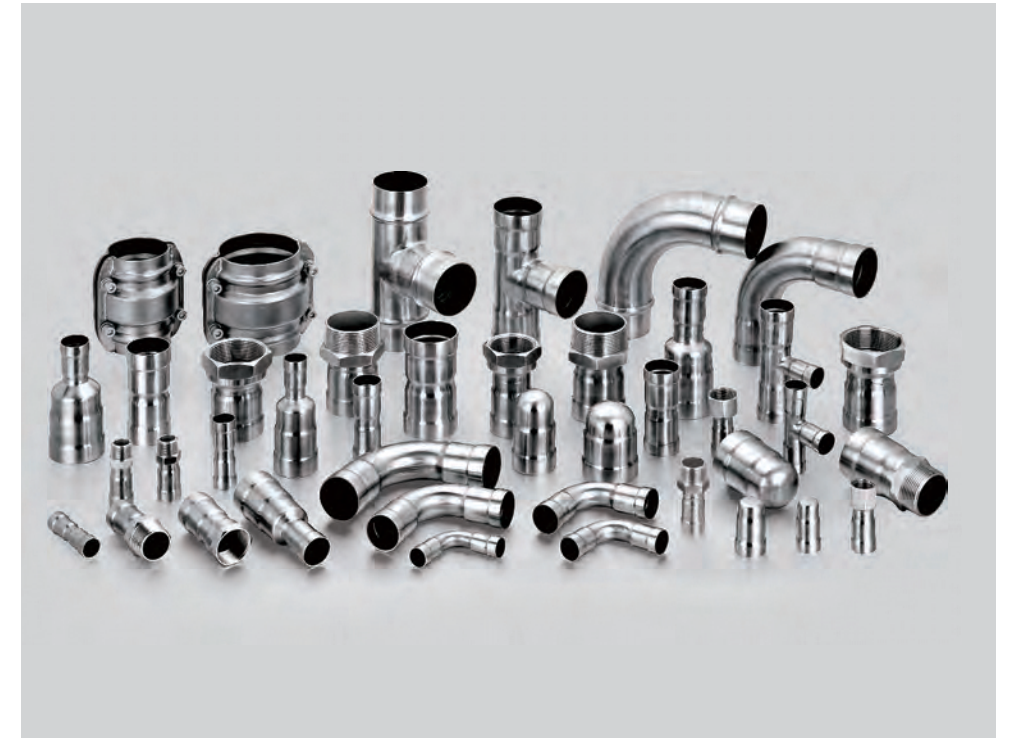
Clamp connection



DN125-250

## ◀ DN125-250

- Clampshell union connector, quick install & re-assembly.
- Convex ring, no shrinking on inner diameter.
- Surface contact, active concentric sealing, leak free.
- Superior reliability & longevity.



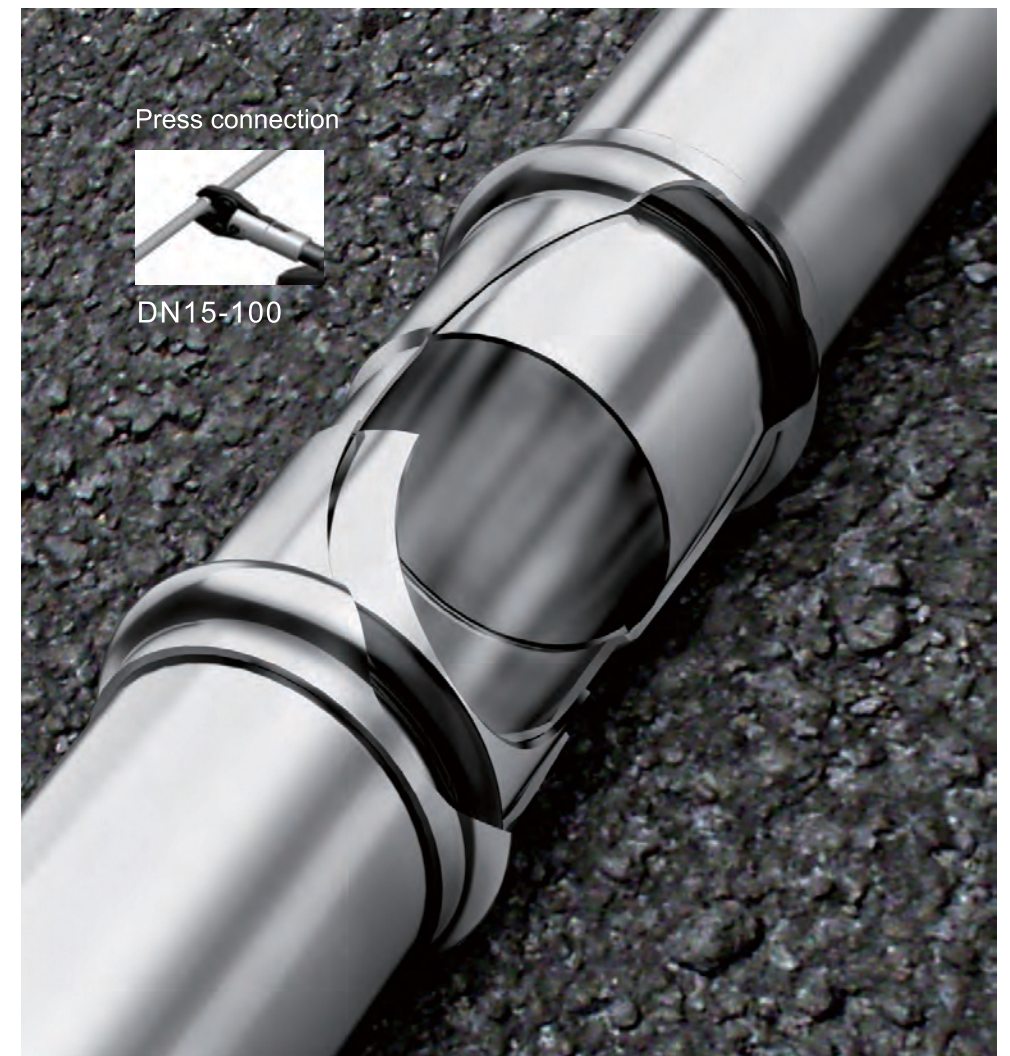
## DN15-100 ▶

- Built-in sealing, options for gas and liquid.
- Extension fitting sleeve grabbing on pipe.
- Quick & modular installation, reduce labor cost.
- Superior reliability & longevity.

Press connection



DN15-100



### Disadvantage of PPR Pipe



- Aging on UV, not suitable for outdoor installation.
- Bacteria/moss grow on light, pollution into fluids.
- Heat expansion 8 times of SS, strength 1/8 of SS, risk of broken in low temperature.
- Leakage/loosening due to plastic hot melting connection, short lifetime.
- Inner size reduction due to hot melting, flow restriction.

### Disadvantage of Carbon Steel Pipe



- Oxidization, rusting will be accelerated after 4-5 years, both inner and outside.
- High flow friction inner surface and pollution into fluids.
- High Leakage & broken risk especially for outdoor and underground installation.
- Thick & heavy pipe, high labor cost due to welding/ threading/ flanging,

## AQUApipe Features & Benefits



- International standards 304/316 stainless steel.
- Premium quality for water, air/ gas and other compatible fluids.
- Widely used in industries like food & beverage, medical & chemical productions, pharmacy etc.



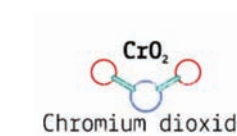
- Wide temperature range by working with proper sealing.
- Moderate expansion characteristics & high tensile strength.
- No risk of breaking due to water freezing.



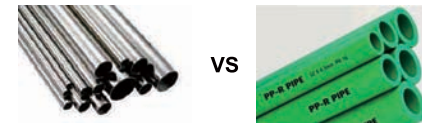
- 10 years warranty for all AQUApipe & fittings.
- Stability for all weather conditions.
- "Soft" connection can absorb 2-3mm expansion/ contraction.



- Corrosion resistance due to chromium dioxide layer.
- Smooth inner surface ensure best flow characteristics.
- No risk on pollution into fluids.



### AQUApipe vs PPR Pipe



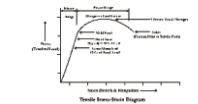
	Items	AQUApipe (304)	PPR pipe	Remark
Corrosion Resistance	Tensile strength(N/mm <sup>2</sup> )	≥520	≥49	PPR's strength only 9.2% of AQUApipe
	Wear resistance	High	Low	PPR much lower resistance to flow impact
	UV impact	No impact	Aging	Plastic will be aging quickly due to constant UV light
	Expansion factor(10 <sup>-6</sup> m/C) (0-100°C)	16	70	Expansion is 8 times of AQUApipe, risk of leaking/ breaking due to temperature change
	Lowest temperature	-40°C, sealing -270°C	-5°C	PPR will be crispy below zero
	Highest temperature	120°C, sealing 400°C	90°C	Risk of toxic materials being separated out when PPR above 90°C
	Environmental endocrine	No	Possible	Disturb endocrine system
Environmental Protection	Contamination precipitation	Very less	Easy to happen	Easy to be polluted due to sunshine and contamination
	Risk of toxic water	No	Possible	If plastic material doesn't comply relevant standard
	Toxic materials	No	Possible	Possible into fluids
	Odours	No	Possible	Possible into fluids
	Recycle	Recycle	Non-degradation	Can not be 100% recycled
	Lifetime	≥100 years	5-20 years	Only ¼ lifetime of AQUApipe

### Physical performance of different pipes



Pipe materials	Density (kg/m <sup>3</sup> )	Expansion factor (10 <sup>-6</sup> m/C)	Thermal conductivity (W/m°C)	Specific heat conductivity (J/KG°C)	Resistivity (Ωkmm <sup>2</sup> /m)	Young's modulus (KN/mm <sup>2</sup> )	Magnetism
AQUApipe	7930	16	15	500	0.72	200	No
Carbon steel pipe	7850	11.6	60	60	0.14	210	Yes
Plastic pipe	UPVC	1350	70	0.05	1470	C.10-18	No
	PE, PEX, PB	950	140				
	PP-R	900	110				

### Tensile strength of metal pipes



Pipe type	Material	Tensile strength (MPa)	Elongation (%)
AQUApipe	304	520-750	> 35
	304L	480-670	
	316	520-680	
	316L	480-620	
Carbon steel	Carbon steel	230-290	> 30
Copper	Copper	210-380	/

### Flow rate comparison



Pipe materials (L/min)	Nominal Diameter					
	15mm	20mm	25mm	32mm	50mm	65mm
AQUApipe	7	16	34	53	174	297
Copper pipe	6	15	30	51	160	265
Galvanized pipe	6	13	25	49	138	265
Aluminum plastic pipe	5	11	24	50	153	/

# PRODUCT TECHNICAL PARAMETERS

\* Standard PN for 304 material, 316 is optional.

## STAINLESS STEEL PIPE



6M Length

AQUApipe	DN mm	OD mm	Thickness mm
5010000001	15	16	0.6
5010000101	15	16	0.8
5010000201	15	16	1
50100010002	20	20	0.8
50100010101	20	20	1
50100010201	20	20	1.2
50100020001	25	25.4	0.8
50100020101	25	25.4	1
50100020201	25	25.4	1.2
50100030001	32	32	1
50100030101	32	32	1.2
50100030201	32	32	1.5
50100040001	40	40	1
50100040101	40	40	1.2
50100040201	40	40	1.5
50100050001	50	50.8	1
50100050101	50	50.8	1.2
50100050201	50	50.8	1.5
50100060001	60	63.5	1
50100060101	60	63.5	1.2
50100060201	60	63.5	1.5
50100140001	65	76.1	1.2
50100140101	65	76.1	1.5
50100140201	65	76.1	2
50100070001	80	88.9	1.2
50100070101	80	88.9	1.5
50100070201	80	88.9	2
50100080001	100	101.6	1.5
50100080101	100	101.6	2
50100090001	125	133	2
50100090101	125	133	2.5
50100100001	150	159	2
50100100101	150	159	2.5
50100110001	200	219	2.5
50100110101	200	219	3
50100120001	250	273	3
50100120101	250	273	4

## PIPE TO PIPE JOINT



AQUApipe	DN mm
51102000001	15
51102010001	20
51102020001	25
51102030001	32
51102040001	40
51102050001	50
51102060001	60
51102140001	65
51102070001	80
51102080001	100
50102090103	125
50102100103	150
50102110103	200
50102120103	250



## 90° ELBOW



AQUApipe	DN mm
51103000001	15
51103010001	20
51103020001	25
51103030001	32
51103040001	40
51103050001	50
51103060001	60
51103140001	65
51103070001	80
51103080001	100
50103090001	125
50103100001	150
50103110001	200
50103120001	250



## 45° ELBOW



AQUApipe	DN mm
51104000001	15
51104010001	20
51104020001	25
51104030001	32
51104040001	40
51104050001	50
51104060001	60
51104140001	65
51104070001	80
51104080001	100
50104090001	125
50104100001	150
50104110001	200
50104120001	250



## EQUAL TEE



AQUApipe	DN mm
51105000001	15
51105010001	20
51105020001	25
51105030001	32
51105040001	40
51105050001	50
51105060001	60
51105140001	65
51105070001	80
51105080001	100
50105090001	125
50105100001	150
50105110001	200
50105120001	250



## END CAP



AQUApipe	DN mm
51106000001	15
51106010001	20
51106020001	25
51106030001	32
51106040001	40
51106050001	50
51106060001	60
51106140001	65
51106070001	80
51106080001	100
50106090001	125
50106100001	150
50106110001	200
50106120001	250



## REDUCING TEE



AQUApipe	DN mm	DN mm
51107010001	20	15
51107020001	25	15
51107020101	25	20
51107030001	32	15
51107030101	32	20
51107030201	32	25
51107040001	40	15
51107040101	40	20
51107040201	40	25
51107040301	40	32
51107050001	50	15

AQUApipe	DN mm	DN mm
51107050101	50	20
51107050201	50	25
51107050301	50	32
51107050401	50	40
51107060001	60	15
51107060101	60	20
51107060201	60	25
51107060301	60	32
51107060401	60	40
51107060501	60	50
51107140001	65	15
51107140101	65	20
51107140201	65	25
51107140301	65	32
51107140401	65	40
51107140501	65	50
51107140601	65	60
51107070101	80	20
51107070201	80	25
51107070301	80	32
51107070401	80	40
51107070501	80	50
51107071401	80	60
51107070601	80	65
51107080101	100	20
51107080201	100	25
51107080301	100	32
51107080401	100	40
51107080501	100	50
51107080601	100	60
51107081401	100	65
51107080701	100	80

AQUApipe	DN mm	DN mm
51107090601	125	60
51107091401	125	65
51107090701	125	80
51107090801	125	100
51107100601	150	60
51107101401	150	65
51107100701	150	80
51107100801	150	100
51107110601	200	60
51107111401	200	65
51107110701	200	80
51107110801	200	100
51107120601	250	60
51107120701	250	80
51107120801	250	100



AQUApipe	DN mm	DN mm
51107100901	150	125
51107110901	200	125
51107111001	200	150
50107120901	250	125
50108121001	250	150
50107121101	250	200



## SWING CHECK VALVE



AQUApipe	DN mm
12080040101	40
12080050101	50
12080060101	60
12080140101	65
12080070101	80
12080080101	100
12080090101	125
12080100101	150
12080110101	200
12080120101	250

\* Male Threaded Joints are needed for DN40-DN50.  
\* Flange Joints are needed for DN60-DN250.

**REDUCING PIPE TO PIPE JOINT**



AQUApipes	DN mm	DN mm
51121010001	20	15
51121020001	25	15
51121020101	25	20
51121030001	32	15
51121030101	32	20
51121030201	32	25
51121040001	40	15
51121040101	40	20
51121040201	40	25
51121040301	40	32
51121050001	50	15
51121050101	50	20
51121050201	50	25
51121050301	50	32
51121050401	50	40
51121060001	60	15
51121060101	60	20
51121060201	60	25
51121060301	60	32
51121060401	60	40
51121060501	60	50
51121140101	65	20
51121140201	65	25
51121140301	65	32
51121140401	65	40
51121140501	65	50
51121140601	65	60
51121070101	80	20
51121070201	80	25
51121070301	80	32
51121070401	80	40
51121070501	80	50
51121070601	80	60
51121071401	80	65
51121080201	100	25
51121080301	100	32
51121080401	100	40
51121080501	100	50
51121080601	100	60
51121081401	100	65
51121080701	100	80



51121090601	125	60
51121091401	125	65
51121091701	125	80
51121090801	125	100
51121110601	150	60
51121101401	150	65
51121100701	150	80
51121100801	150	100
51121110601	200	60
51121111401	200	65
51121110701	200	80
51121110801	200	100
51121120601	250	60
51121121401	250	65
51121120701	250	80
51121120801	250	100
50121100901	150	125
50121111001	200	150
51121121001	250	150
51121121101	250	200

**THREAD JOINT FEMALE (BSP)**

\* NPT is available.

AQUApipes	DN mm	DN mm
51119000001	DN15	1/2"
51119000101	DN15	1/2"
51119010001	DN15	3/4"
51119010101	DN20	1/2"
51119010201	DN20	3/4"
51119020001	DN20	1"
51119020101	DN25	3/4"
51119020201	DN25	1"
51119020301	DN25	1 1/4"
51119030201	DN32	1"
51119030301	DN32	1 1/4"
51119030401	DN32	1 1/2"
51119040301	DN40	1 1/4"
51119040401	DN40	1 1/2"
51119050401	DN50	1 1/2"
51119050501	DN50	2"
51119060601	DN60	2 1/2"
51119140601	DN65	2 1/2"
51119070701	DN80	3"

**THREAD JOINT MALE (BSP)**

\* NPT is available.

AQUApipes	DN mm	DN mm
51117000001	DN15	1/2"
51117000101	DN15	3/4"
51117010001	DN20	1/2"
51117010101	DN20	3/4"
51117010201	DN20	1"
51117020001	DN25	1/2"
51117020101	DN25	3/4"
51117020201	DN25	1"
51117020301	DN25	1 1/4"
51117030201	DN32	1"
51117030301	DN32	1 1/4"
51117030401	DN32	1 1/2"
51117040301	DN40	1 1/4"
51117040401	DN40	1 1/2"
51117050401	DN50	1 1/2"
51117050501	DN50	2"
51117060601	DN60	2 1/2"
51117140601	DN65	2 1/2"
51117070701	DN80	3"

**FLANGE**

AQUApipes	DN mm
51170030001	DN32
51170040001	DN40
51170050001	DN50
51170060001	DN60
51170140001	DN65
51170070001	DN80
51170080001	DN100
51171060501	DN60-DN50
51171061401	DN60-DN65
51171140601	DN65-DN60
51171140701	DN65-DN80
51171071401	DN80-DN65
51171070801	DN80-DN100
51171080701	DN100-DN80
51171090801	DN125-DN100
50170090001	DN125
50170100001	DN150
50170110001	DN200
50170120001	DN250
50171080901	DN100-DN125
50171091001	DN125-DN150
50171100901	DN150-DN125
50171111001	DN200-DN150
50171121101	DN250-DN200

**UNION FEMALE (BSP)**

\* NPT is available.

AQUApipes	DN mm	DN mm
51150000001	DN15	1/2"
51150010101	DN20	3/4"
51150020201	DN25	1"
51150030301	DN32	1 1/4"
51150040401	DN40	1 1/2"
51150050501	DN50	2"

**SHORT ELBOW FEMALE**

\* NPT is available.

AQUApipes	DN mm	DN mm
51169000001	DN15	1/2"
51169010101	DN20	3/4"
51169010001	DN20	1/2"
51169020201	DN25	1"
51169020101	DN25	3/4"
51169030301	DN32	1 1/4"
51169030201	DN32	1"

**SHORT ELBOW**

AQUApipes	DN mm
51163000001	DN15
51163010101	DN20
51163010001	DN20-DN15
51163020201	DN25
51163020101	DN25-DN20
51163030301	DN32
51163030201	DN32-DN25

**PIPE BRIDGE**

AQUApipes	DN mm
50101000001	DN15
50101010001	DN20
50101020001	DN25
50101030001	DN32

**SHORT THREAD TEE FEMALE (BSP)**

\* NPT is available.

AQUApipes	DN mm	DN mm
51167000001	DN15	1/2"
51167010101	DN20	3/4"
51167010001	DN25	1/2"
51167020201	DN25	1"
51167020101	DN25	3/4"
51167030301	DN32	1 1/4"
51167030201	DN32	1"

**SHORT THREAD TEE MALE (BSP)**

\* NPT is available.

AQUApipes	DN mm	DN mm
51165000001	DN15	1/2"
51165010001	DN20	1/2"
51165010101	DN20	3/4"
51165020001	DN25	1/2"
51165020101	DN25	3/4"
51165020201	DN25	1"
51165030201	DN32	1"
51165030301	DN32	1 1/4"

**90° ELBOW FEMALE (BSP)**

\* NPT is available.

AQUApipes	DN mm	DN mm
51113000001	DN15	1/2"
51113010001	DN20	1/2"
51113010101	DN20	3/4"
51113020101	DN25	3/4"
51113020201	DN25	1"
51113030201	DN32	1"
51113030301	DN32	1 1/4"
51113040401	DN40	1 1/2"
51113050501	DN50	2"

**90° ELBOW MALE (BSP)**

\* NPT is available.

AQUApipes	DN mm	DN mm
51115000001	DN15	1/2"
51115010001	DN20	1/2"
51115010101	DN20	3/4"
51115020101	DN25	3/4"
51115020201	DN25	1"
51115030201	DN32	1"
51115030301	DN32	1 1/4"
51115040301	DN40	1 1/4"
51115040401	DN40	1 1/2"
51115050401	DN50	1 1/2"
51115050501	DN50	2"

**BALL VALVE (SS)**

AQUApipes	DN mm	DN mm
51151000001	DN15	
51151010001	DN20	
51151020001	DN25	
51151030001	DN32	
51151040001	DN40	
51151050001	DN50	

**BALL VALVE (SS) MALE (BSP)**

\* NPT is available.

AQUApipes	DN mm	DN mm
51151000101	DN15	1/2"
51151010101	DN20	3/4"
51151020101	DN25	1"
51151030101	DN32	1 1/4"
51151040101	DN40	1 1/2"
51151050101	DN50	2"

**BALL VALVE (SS) FEMALE (BSP)**

\* NPT is available.

AQUApipes	DN mm	DN mm
51151000201	DN15	1/2"
51151010201	DN20	3/4"
51151020201	DN25	1"
51151030201	DN32	1 1/4"
51151040201	DN40	1 1/2"
51151050201	DN50	2"

**CLAMP BUTTERFLY VALVES (SS)**

AQUApipes	DN mm
51151060101	DN60
51151140101	DN65
51151070101	DN80

**TURBINE BUTTERFLY VALVES (SS)**

AQUApipes	DN mm
51151080101	DN100
50151090101	DN125
50151100101	DN150
50151110101	DN200
50151120101	DN250

**BALL VALVE (BRASS) FEMALE (BSP)**

\* NPT is available.

AQUApipes	DN mm	DN mm
30173000001	1/2"	1/2"
30173010001	3/4"	3/4"
30173020001	1"	1"
30173030001	1 1/4"	1 1/4"
30173040001	1 1/2"	1 1/2"
30173050001	2"	2"



**BALL VALVE(BRASS) MALE (BSP)**



\* NPT is available.

AQUApipe	DN	Length (MM)
30173000101	1/4"	1/4"
30173010101	3/4"	3/4"

**MALE\*FEMALE (BSP)**



\* NPT is available.

AQUApipe	DN	Length (MM)
30173000201	1/2" * 1/2"	1/2" * 1/2"
30173010201	3/4" * 3/4"	3/4" * 3/4"

**BALL VALVE(SS) FEMALE (BSP)**



\* NPT is available.

AQUApipe	DN	Length (MM)
50175000001	1/2"	1/2"
50175010001	3/4"	3/4"
50175020001	1"	1"
50175030001	1 1/4"	1 1/4"
50175040001	1 1/2"	1 1/2"
50175050001	2"	2"

**BALL VALVE(SS) MALE (BSP)**



\* NPT is available.

AQUApipe	DN	Length (MM)
50175000101	1/2"	1/2"
50175010101	3/4"	3/4"
50175020101	1"	1"
50175030101	1 1/4"	1 1/4"
50175040101	1 1/2"	1 1/2"
50175050101	2"	2"

**BALL VALVE(SS) MALE\*FEMALE**



\* NPT is available.

AIRpipe	DN	Length (MM)
50175000201	1/2"	1/2"
50175010201	3/4"	3/4"
50175020201	1"	1"
50175030201	1 1/4"	1 1/4"
50175040201	1 1/2"	1 1/2"
50175050201	2"	2"

**CUTTER TOOL FOR DN15-DN50**



AQUApipe
50135000201

**FLEXIBLE HOSE**



AQUApipe	DN	Length (MM)
51155000001	DN15	300mm
51155010001	DN20	300mm
51155020001	DN25	300mm
51155030001	DN32	300mm
51155040001	DN40	300mm
51155050001	DN50	300mm
51155060001	DN60	500mm
51155140001	DN65	500mm
51155070001	DN80	500mm
51155080001	DN100	500mm



AQUApipe	DN	Length (MM)
50155090001	DN125	500mm
50155100001	DN150	500mm
50155110001	DN200	500mm
50155120001	DN250	500mm

**THREAD JOINT MALE(BSP)**



\* NPT is available.

AQUApipe	DN	Length (MM)
50131000001	1/2"	1/2"
50131010001	3/4"	3/4"
50131020001	1"	1"
50131030001	1 1/4"	1 1/4"
50131040001	1 1/2"	1 1/2"
50131050001	2"	2"
50131000002	1/2"	1/4"
50131010002	3/4"	1/2"
50131020002	1"	3/4"
50131010003	3/4"	1/2"
50131020003	1"	1/2"

**DEBURRER TOOL**



AQUApipe
50135000301

For all diameters

**FLANGE FEMALE(BSP)**



\* NPT is available.

AQUApipe	DN	Length (MM)
30170040401	DN40	1 1/2"
30170050501	DN50	2"
30170060201	DN63	1"
30170060401	DN63	1 1/2"
30170060501	DN63	2"
30170070201	DN80	1"
30170070401	DN80	1 1/2"
30170070501	DN80	2"
30170070601	DN80	2 1/2"
30170080401	DN100	1 1/2"
30170080501	DN100	2"
30170080601	DN100	2 1/2"
30170090401	DN125	1 1/2"
30170090501	DN125	2"
30170090601	DN125	2 1/2"
30170090701	DN125	3"
30170100401	DN150	1 1/2"
30170100501	DN150	2"
30170100601	DN150	2 1/2"
30170100701	DN150	3"

**PIPE CLIP**



AQUApipe	DN
50122000101	DN15
50122010101	DN20
50122020101	DN25
50122030101	DN32
50122040101	DN40
50122050101	DN50
50122060101	DN60
50122140101	DN65
50122070101	DN80
50122080101	DN100
50122090101	DN125
50122100101	DN150
50122110101	DN200
50122120101	DN250

# Technical Specifications

- Max. working pressure:  
DN15-150, 16bar/ 232psi;  
DN200-250, 13bar/ 188psi.
- Max. vacuum: 1mbar/ 0.03 in. Hg absolute.
- Working temperature range & fluid medium table:

Sealing code	Description	Color	Working Temperature	Main applicable medium
EPDM *	Ethylene Propylene Diene Monomer		-20°C to 120°C -4°F to 248°F	Potable water, hydronic heating, low pressure steam, fire water system.
FKM	Fluoroelastomer		-20°C to 200°C -4°F to 392°F	High temp. steam & gas, solar, heating, compressed air
NBR	Nitrile Butadiene Rubber		-20°C to 100°C -4°F to 212°F	Gas, fuel, compressed air
HNBR **	Hydrogenated Nitrile Butadiene Rubber		-40°C to 150°C -40°F to 302°F	Gas, fuel/ oil high temp. or heating systems, HVAC

\* Optional NSF certified sealing for DN 15 to 100.

\*\* Confirm with your sales before order.

## Main Applications

Below are typical industrial and civil applications, please consult AQUApipe for selection of stainless steel grade and sealing type:  
**Compressed air, vacuum, nitrogen & other inert gases, saturated steam, fuel & oil, sea water, drinking water, gas supply, heating water, heating pump, cooling water, solar water connections, fire water, etc.**





# Quick & Easy Installation



## Press Tools



AQUApipe	Description	Range
51144000104	Full tool set, include 6 jaws (DN15, DN20, DN25, DN32, DN40, DN50) + 1Jaw clasper + 1 Portable gun + 2 Batteries + 1 Charger	DN15-DN50



51144000103	Press jaws set include 6 jaws (DN15, DN20, DN25, DN32, DN40, DN50)	DN15-DN50
-------------	--	-----------



AQUApipe	Description	Range
51144000111	Full tool set, include 4Jaws (DN60, DN65, DN80, DN100) + 1Jaw clasper + 1 Hydraulic cylinder + 1 Chargable pump (Include Wire control & 1.5m Oil hose ) + 2 Batteries + 1 Charger	DN60-DN100



51144000108	Press jaws set include 4 jaws (DN60, DN65, DN80, DN100)	DN60-DN100
-------------	---	------------



AQUApipe	Description	Range
12144000109	Chargable pump	DN15-DN100
12144000108	Hydraulic cylinde * Working with jaw clasper and jaw	

## DN15 - 100 Press Connection



Use hand cutter tool to cut pipe.



Deburr and chamfer the pipe end.



To make sure build-in seal well.



Use caliper tp check and finish.



Pressing by press tools.

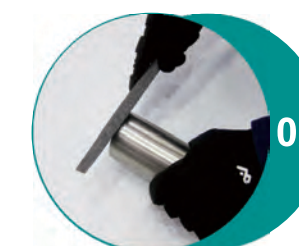


Mark the pipe with a marker pen.

## DN125 - 250 Clamp Connection



Use cutting machine to cut pipe.



Deburr and chamfer the pipe end.



Use lugging machine to lug pipe.



Tighten the clamp screws, make the clamp closed fully.



Position the clamp over the sealing element, make sure lugs are in the groove.



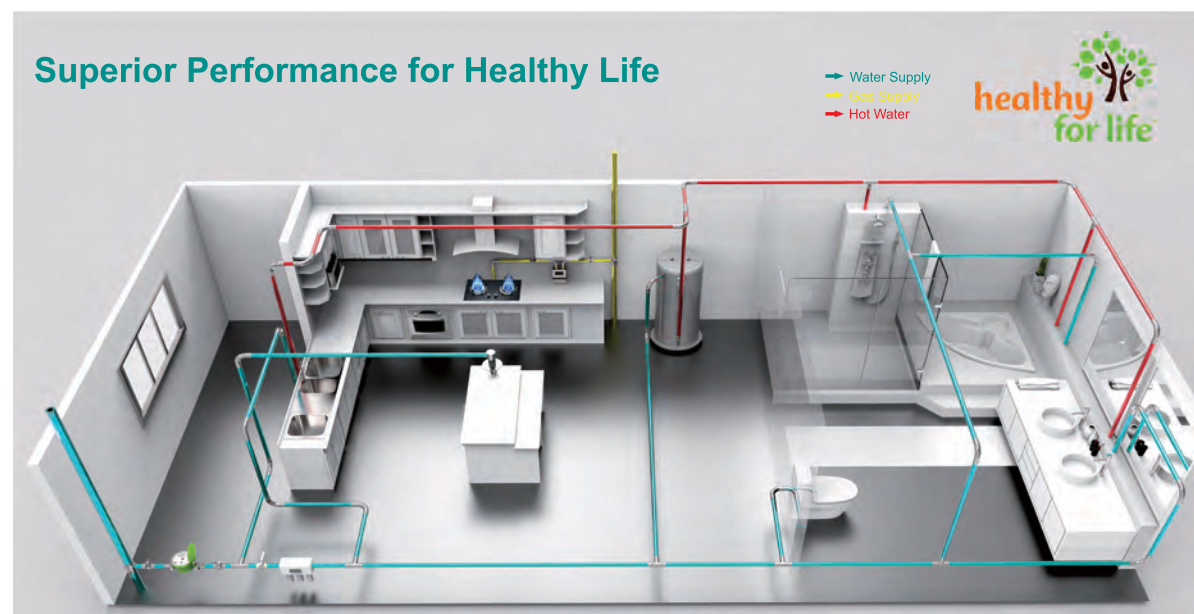
Insert pipes to the seal 2-3cm for both side.

# Applications

## Industrial Installations

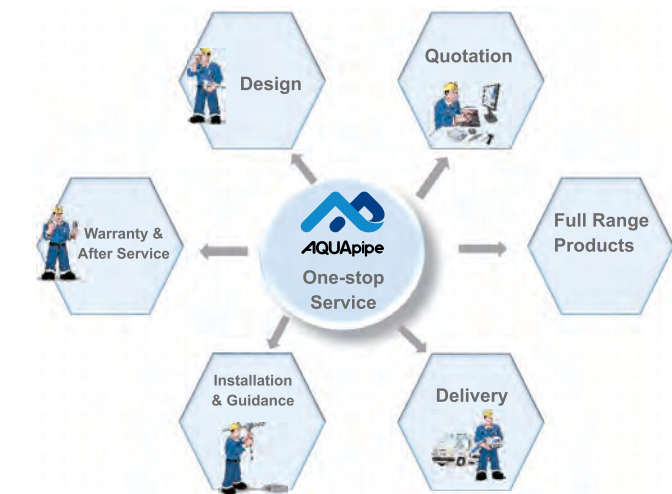


## Civil building Installations



# One-stop Service

AQUApipe is providing experience of **“One-stop Service”** to the worldwide customers, from the design of the pipe system to after service, one stop solution.



## Warranty and Certifications

### 10 Year Warranty:



AQUApipe warrants its products to be free of defects in material for a period of ten years from the date of product purchase.

AQUApipe does not warrant the design, assembly or installation of the system, but only the components within AQUApipe's LOGO. AQUApipe is not responsible for improper assembly, installation, or for any modifications of the product.

#### The warranty is void upon:

- (a) Failure to follow assembly or installation guidelines;
- (b) Alteration, misuse or abuse of, or damage to the products;
- (c) Operation beyond the design range, excessive pressure, stress, or mishandling in any way;
- (d) Use other than for the intended purpose or in a manner other than specified by AIRpipe.

\* AQUApipe is a product brand in AIRpipe Group.



#### Certifications and Compliances:

ISO 9001 version 2015  
 ISO 14001 version 2004  
 ASME, UL, TUV, CRN, CE, EN and TS

