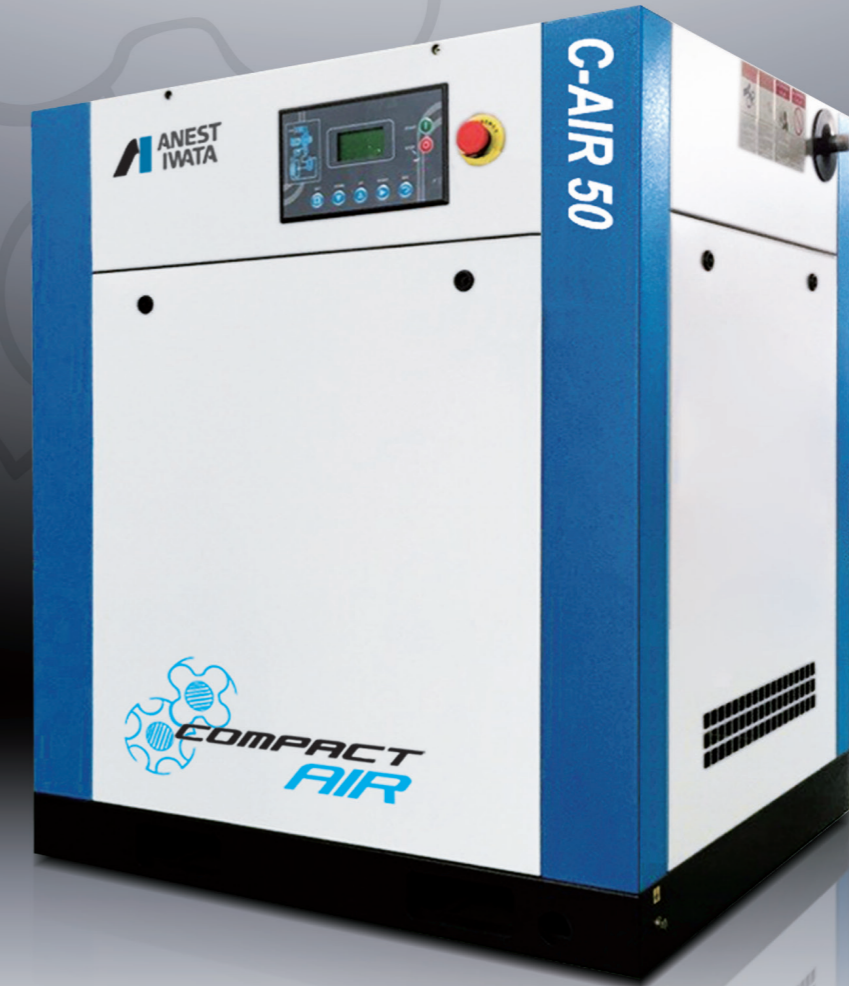


Model	Unit		C-AIR 8	C-AIR 10	C-AIR 15	C-AIR 20	C-AIR 25	C-AIR 30	C-AIR 40	C-AIR 50
Power	HP		7.5	10	15	20	25	30	40	50
	kW		5.5	7.5	11	15	18.5	22	30	37
Maximum Pressure	Bar		7.0 / 8.0 / 10.0 / 12.5							
Pressure Control Range	Bar		6.0 - 7.0 / 7.0 - 8.0 / 9.0 - 10.0 / 11.5 - 12.5							
Capacity (FAD)	7 bar	L/min	820	1113	1680	2415	3255	3570	5145	6300
		CFM	29	39.33	59.36	85.34	115.02	126.15	181.80	222.61
	8 bar	L/min	788	1060	1575	2205	2940	3360	4830	5880
		CFM	27.84	37.46	55.65	77.92	103.89	118.73	170.67	207.77
	10 bar	L/min	695	987	1365	1890	2520	3255	4305	5355
		CFM	24.56	34.88	48.23	66.78	89.05	115.02	152.12	189.22
12.5 bar	L/min	515	788	1260	1785	2100	2795	3780	5250	
	CFM	18.20	27.84	44.52	63.07	74.20	98.76	133.57	185.51	
Drive Type			Belt Drive							
Discharge Connection	inch		Rc 1/2	Rc 1/2	Rc 3/4	Rc 3/4	Rc 1	Rc 1	Rc 1	Rc 1-1/2
Sound Level	dB[A]		76	76	76	76	74	74	74	75
Dimension	Length	mm	900	900	800	800	900	900	900	1000
	Width	mm	680	680	950	950	1150	1150	1150	1300
	Height	mm	970	970	1130	1130	1350	1350	1350	1470
Weight	Kg		250	250	380	420	560	580	640	800

SCREW COMPRESSOR



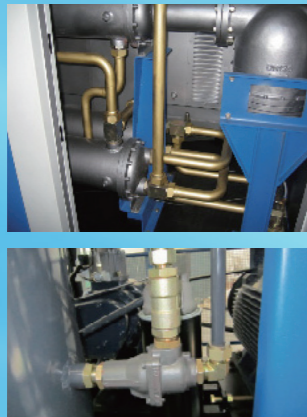
SCREW AIR COMPRESSOR

Full-automatic Interlocking Control & Operation Management



12 alarms on key indicators such as pressure, temperature, electric current, signal etc. and comprehensive safety precautions with an intelligent micro-computerized controller equipped with English display switching, maintenance deadline reminding. New multiplayer joint control adopted for RS485 communication Interface, showing current status to clients simply and safely.

Safe and leakage free Connections



All-steel pipeline and flexible connections adopted free from conventional low-cost hose design in the industry to eliminate leakage resulted from pipeline aging and bursting; meanwhile, clamps or fluororubber O ring flexible plan seal is adopted to reduce pressure loss in oil lines or leakage to further buffer vibrations effectively.

Design of Safety Measures



Guards installed outside of drive system according to CE and UL standards to prevent finger reaching in so as to effectively protect Human safety. Safety earthing is provided as standard configuration to effectively prevent safety hazards caused by static electricity.

Siemens Electrical Components



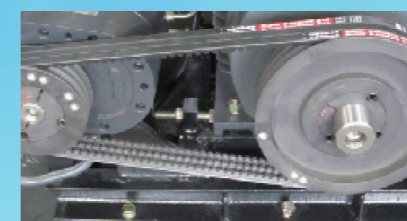
Reliable Siemens core electrical control components with sophisticated technology to ensure stable and long-term operation of the machine unit with clear and reasonable processes.

Heavy-duty Air Filter (with prefilter)



With imported air filter with high efficiency and low pressure loss, quality of intake air in controlled at air compressor source to ensure stable normal operation of the machine under complicated working conditions.

High-efficiency Drive System of US Brand



Martin pulley made in USA and OPT belt made in Germany to ensure a transmission efficiency no less than 98% and a service life 3-5 times of those driving systems made locally.



Always Ahead

With **ANEST IWATA!**